



**SPAPANEL™**

Don't tile it. Spapanel it.



**THE LUXURY ALTERNATIVE TO TILES**



Home Owners

04



Builders & Developers

06



Government Housing

08



Hotels & Motels

10



Independent Living

12



Student Accommodation

14

## Introduction

Introduction to Spanel 03

## Markets

Home Owners	04
Builders & Developers	06
Government Housing	08
Hotels & Motels	10
Independent Living	12
Student Accommodation	14

## Colours & Finishes

Colours & Finishes	18
Spanel Custom Create - Photowall	22

## Product Specification

Spanel Accreditation	24
Spanel Hydrolock®	25

## Company

Sustainability	26
----------------	----

## Miscellaneous

FAQ's	27
-------	----



# Don't tile it. Spanpanel it.

Spanpanel is a long-lasting, waterproof, interior wall lining system with a hygienic easy-to-clean, high-impact surface.

Cutting labour times and costs, Spanpanel is suitable for new build or refurbishment projects and does not require specialist fitting. With over 78 laminate finishes, Spanpanel can be used in commercial environments such as residential apartments, changing rooms, hospitals, hotels and holiday parks, as well as domestic bathrooms, shower enclosures and kitchens.

The Spanpanel Wall Lining System, if installed and used in accordance with our published guidelines and BRANZ appraisal, can remove the need for fibre cement backing boards and full height waterproof membranes, making Spanpanel a 3-in-1 solution.

**Spanpanel Wall Lining System meets the  
waterproof requirements of AS3740**



# Home Owners

Low maintenance, and less disruption to your life

## How Home Owners benefit from Spanpanel

- Clean lines, no grout & non-porous
- Easy clean & extremely low-maintenance
- Longevity, stays looking fresher for longer
- Bathroom back in use quickly







# Key considerations for Home Owners...

## Saving your time...

Nobody wants to spend their hard-earned free time cleaning and doing unnecessary maintenance, nor do they like being without their bathroom for any length of time

## Easy cleaning...

This is why Spapanel is such a superior alternative to tiles, as it is so easy to clean and maintain. It needs cleaning far less frequently than tiles, due to there being no grout, and the product itself is non-porous.

## Fresher for longer...

The longevity of Spapanel will outlast tiles and stay looking fresh, clean and new for many years to come.

## Speed...

Using Spapanel for your bathroom reno means that you can get your bathroom back and finished 4x faster than if it was tiled, due to how quick it is to install. There will be no waiting around for membranes to dry, and tile adhesive and grout to set.

## Less tradies...

Spapanel can be installed by one trade. No need for multiple trades to come into your home to do different parts of the reno.



**Quick & Easy  
installation**



**Completely waterproof  
spaces with no grout**



**Easy to clean  
& maintain**

# Builders & Developers

Reduce on-site trades and labour times

How builders & developers benefit from Spanpanel

- Speed: build within deadlines to avoid late penalties
- Wide range of decors and textures to differentiate homes
- Significantly reduced build programmes, remedial & material costs
- No need for specialised trades





# Key considerations for Builders & Developers...

The building industry continues to be challenged by skill shortages, increased labour costs and extended build times. To address this challenge, there is an increased use of off-site manufacturing to shorten timescales and drive production efficiency.

Housebuilders also have the challenge of meeting the modern buyer's expectations, from keeping on-trend to ensuring durability of interiors.

## Differentiate New Homes with Standard to Premium Options

Spapanel products are available in a wide range of decors and textures, from neutral classic designs developed to suit a broad range of tastes to the higher-impact, bespoke choices offered into the contemporary range.

## Installation Savings

Spapanel offers multiple cost savings against traditional tiles. Spapanel removes the need for specialist trades on-site, fibre-cement plaster board & full height membrane are no longer required (material and time savings). Fitting time is significantly reduced and unlike tiles and grout, there is no need to wait for drying with Spapanel.

## Reduced Remedial Requirements

Remedial issues are not associated with Spapanel and the product comes with a huge 15 year warranty.





# Government Housing

Minimal maintenance,  
rapid installation

## How Government Housing benefits from Spanpanel

- Wall panels are four times quicker to install than traditional tiles
- Reduce cost in both materials and installation
- Reduce maintenance requirements
- Have no grout and are simple to clean







# Key considerations for Government Housing...

Government Housing Associations face many challenges including regulatory frameworks, the need for more housing stock, faster construction and maintenance, as well as duty to accommodate those requiring increased accessibility. Spapanel products improve speed of build and provide a number of other key benefits including reduced maintenance and vacancy downtime.

## Increased Speed of Construction

Speed of construction is crucial in delivering government housing, Spapanel walls can be fitted in 24 hours compared to 3-5 days for traditional tiles. The rapid install is made possible because Spapanel can be fitted straight onto timber framework or over existing tiles and there is no need to wait for specialist trades on-site.

All Spapanel products come with the seamless Hydrolock® T&G detail, which just clicks into place, providing a rapid solution for the interior envelope.

## Reduced Maintenance Costs and Occupancy Downtime

One of the major challenges in government housing bathrooms is the need to refresh for incoming tenants. This results in significant cleaning and, in many cases, replacing the tiles after a tenant moves out. This issue can be dramatically reduced with the use of Spapanel products as all they require is a simple wipe down with a non-abrasive detergent to maintain a pristine condition well beyond the 15 year warranty.

## Strength and Robustness

Spapanel has high-impact resistance due to its solid core and product makeup, lasting the test of time.

# Hotels & Motels

Increased style, reduced  
occupancy downtime

## How Hotels & Motels benefit from Spanpanel

- Wide range of long-lasting contemporary decors and textures
- Provides significant time and cost savings
- Maximised room occupancy rates
- Reduced facilities management costs





# Key considerations for Hotels & Motels...

All Hotels and Motels, from national chains to city boutiques, require regular renovation to avoid outdated decors and general deterioration.

## Keeping Your Hotels On-Trend

For years, Spapanel products have kept hotels at the forefront of interior fashion. The wide range of decors and textures is updated on a regular basis to ensure that finishes are on trend.

## Reduced Occupancy Downtime

Hoteliers rely on fast renovations to maximise their profitability, customer satisfaction and minimise guest disruption. Using Spapanel products fast tracks room upgrades and provides a number of key benefits including reducing maintenance and vacancy downtime.

A hotel room can have all wall panels fitted and ready to use in 24 hours due to Spapanel efficiencies such as the smart Hydrolock® system and the panels' ability to perform, both structurally and decoratively.

## Consistency of Hotel Brand

Style is everything when it comes to a hotel. It helps determine the guests' experience and impacts pricing structure, reviews and reputation. The decor choice and ability to use bespoke designs through Spapanel's "Create Range" helps to make brand representation easier.

## Reduced cleaning and room preparation time, ready for the next paying guest

The easy clean surface of Spapanel allows you to get the room ready for the next paying guest quickly and easily.



# Independent Living

Combines inclusivity  
with practical luxury

## How Independent Living Providers benefit from Spanpanel

- Design led interiors accessible to all
- Clean, hygienic installation that requires minimal joints
- Provides significant time and cost savings
- Reduces adaptation timescales





# Key considerations for Independent Living...

Independent living means all people having the same freedom, choice, dignity and control at home, at work and in the community. Spapanel products provide practical assistance to make that a reality. In both residential and workplace environments, it is easy to clean and maintain walls.

## Inclusive Environments with Modern Designs

Traditionally, hygienic and accessible environments have not provided the most contemporary of atmospheres, however, with Spapanel, this is changing. The inclusive interiors offer modern style through a wide range of classic and contemporary wall decors with fashionable base colours and an attractive sparkle finish.

Independent living providers need to consider the variance between walls and floor for the visually impaired, Spapanel's wide range of decors facilitate this without compromising on aesthetics.

## Faster Adaptations

A fundamental challenge for independent living providers is the speed of adaptation. Adaptations must mean minimal disruption to clients, tenants and guests. Spapanel panels can assist through the reduced requirement for backing board materials, no need to wait for specialist trades on-site, and they can be fitted and ready for use in 24 hours.



**Quick & Easy  
installation**



**Completely waterproof  
spaces with no grout**



**Easy to clean  
& maintain**



# Student Accommodation

Vibrant and hygienic interiors

How Student Accommodations benefit from Spanpanel

- Hard-wearing, vibrant interiors
- Major time savings for accelerated build programmes
- Reduces cleaning requirements
- Increase room occupancy rates







# Key considerations for Student Accommodation...

Universities are under increasing pressure to provide suitable accommodation for the student market. The competitive nature of this industry means that it is more challenging than ever to compete for undergraduates and funds. The volume of students each year is growing significantly, meaning universities need to ensure that their developer partners can source the best value, speed and ease of construction.

## Creating Demand for Modern Accommodation

Students have high expectations of their living quarters, from the need for an en-suite bathroom to stylish decor. Spapanel helps deliver vibrant interiors cost effectively through a range of 64 decors, including stunning classic panels as an alternative to tiles for the top end of the student market, to bright contemporary panels with boutique designs for mid-range.

## Speed of Renovation

Universities have very limited time periods to perform renovations between terms and summer visitors. Spapanel products can dramatically reduce the time required to turn rooms around.

## Minimal Cleaning Requirements

Spapanel products are easy to clean, have no grout, require minimal maintenance compared to traditional tiles, increase life cycle and reduce facilities management costs.







*Spanel Contemporary Range - High Gloss, Colour - Rosso Devil*





## Classic Range



Available in 2.72m



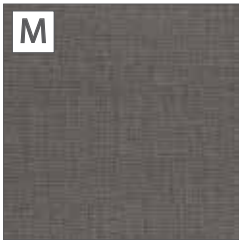
Matt/Textured



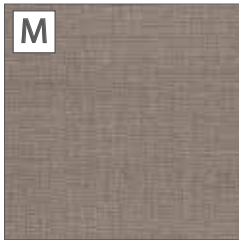
Gloss

### Matt & Textured

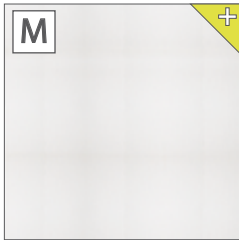
Spanpanel Classic Matt and Textured ranges have an exquisite selection of textured finishes, all rich in depth and colour that transmit warm tones which are perfect for creating the ultimate environment for relaxation.



Umber Brocade  
290



Taupe Brocade  
275



White Brocade  
8001



Kalahari  
372



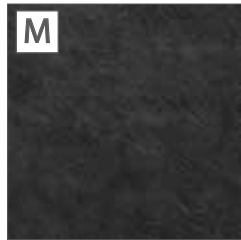
Sahara  
476



Patina Bronze  
0794



Riven Marble  
9241



Riven Slate  
2859

### Gloss & Marbles

Elegant traditional gloss finishes, designed to create a wow factor in your home. Featuring natural and precious stone glosses, these finishes help transport the natural world into the heart of your home. Use them to create a striking and relaxing ambience that needs very little maintenance.



Antique Marble  
701



Classic Marble  
141H



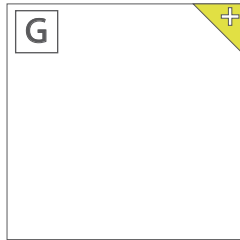
Cappuccino Stone  
7256



Midnight Stone  
0379



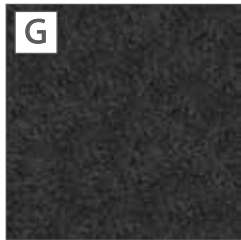
Travertine  
3256



White Gloss  
G85



Frost White  
049



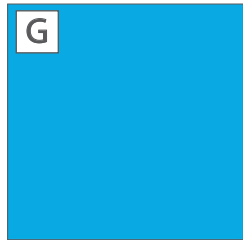
Veneto  
410HG

## Contemporary Range

**M** Matt/Textured **G** Gloss

### High Gloss

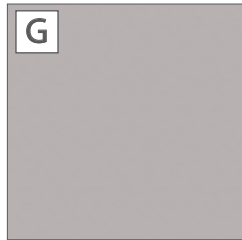
Featuring a truly unique look, high gloss panels are designed to completely transform any space into a bright and contemporary room. The stylish gloss finishes ensure superior light reflection to create the illusion of space, no matter how small the area, and immediately brighten the home. The high gloss range is especially effective as both kitchen and bathroom splashbacks, providing a watertight and luxurious solution.



Blu Valencia  
0569



Fuschia  
0594



Grigio Sasso  
0232



Melanzana  
0709



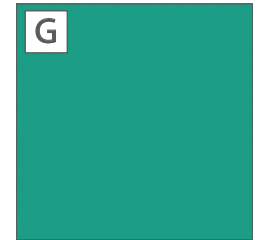
Nero  
0080



Rosso Devil  
0561



Verde Scozia  
0665



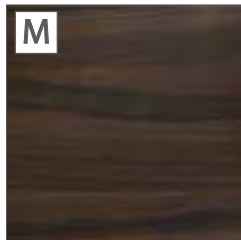
Verde Mare  
3141

### Wood

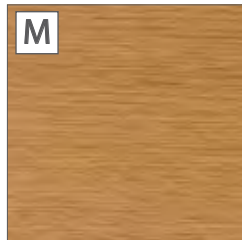
Using woods in the bathroom is synonymous with spa-like luxury, offering a timeless look that will remain elegant. For ultimate indulgence, use Spanpanel wood panels in your bathroom or wet-room for a relaxing spa feel, creating a haven away from the rest of the home. The natural look combined with the rich texture of panels promotes relaxation.



Ash Linosa Natural  
Wood  
NW7601



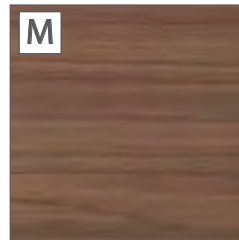
Boston Walnut  
Suede  
SU7706



Brown Oak Suede  
SU7404



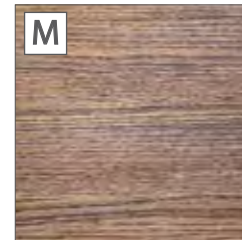
Jovenile Walnut  
Natural Wood  
NW7703



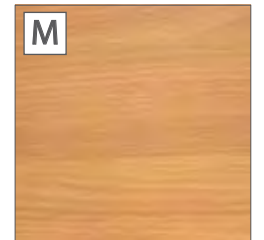
Lorraine Walnut  
Suede  
SU7710



Tectona Natural  
Wood  
NW7101



Oak Graphite Natural  
Wood  
NW7423



Red Beech Suede  
SU7009

## Contemporary Range Continued



Available in 2.72m



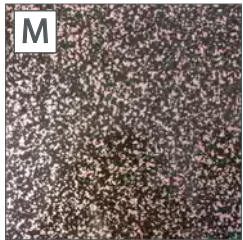
Matt/Textured



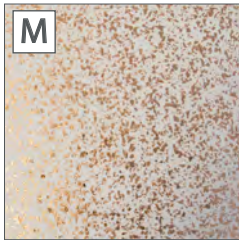
Gloss

### Contemporain

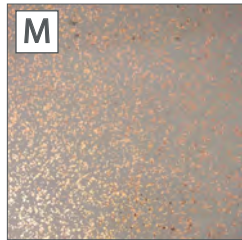
The ultra-modern, chic Contemporain range delivers a stylish, en vogue offering for the home. Featuring exciting, cutting edge finishes to impress with an evident statement. These stunning and easy to maintain finishes are designed to stay looking as good as new, ensuring beautiful, fashionable interiors that will last a lifetime.



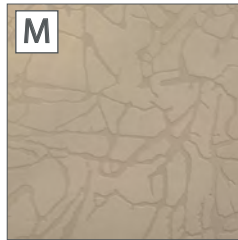
Noir D'or  
CO600



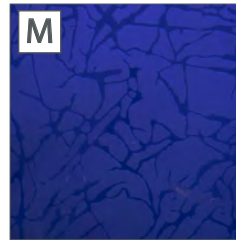
Blanc D'or  
CO700



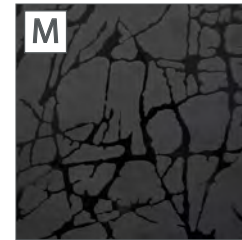
Gris D'or  
CO800



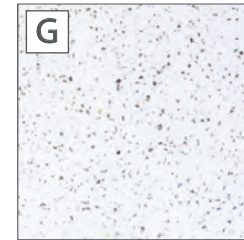
Terre Beige  
CO8207



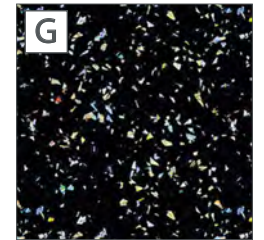
Terre Bleue  
CO8423



Terre Noire  
CO8142



Blizzard  
G030



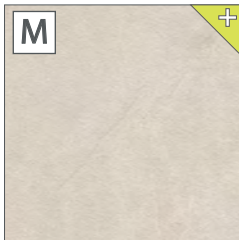
Twilight  
G033

### Modern

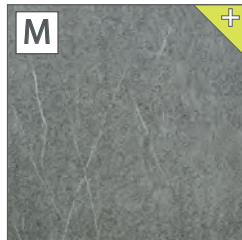
For a bathroom that is modern looking and on-trend, the modern collection is available in a range of designs which create exactly this. Enhanced by a smooth on-trend finish for a contemporary haven in your own home.



Cool Mica  
826



Warm Mica  
835



Silver Grey Granite  
836



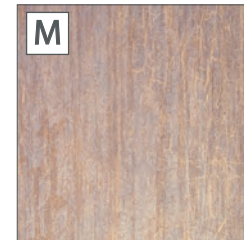
Monsoon  
433



Arctic Stone  
3331



Fusion  
9370



Copper  
5599



Urban Stone  
047



## Contemporary Range Continued

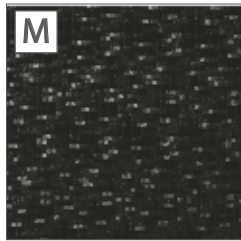
**M** Matt/Textured **G** Gloss

### Boutique

Featuring a range of intricately detailed panels, the Boutique range is designed to bring an exclusive and individual feel to your interiors. The luxurious panels all come with easy maintenance and are available with waterproof Hydrolock® joints for simple installation. This means you can enjoy a stunning home with complete peace of mind.



Black Lace  
LA8142



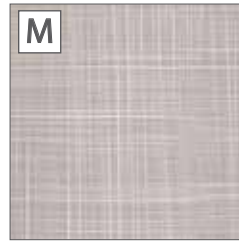
Black Satin Weave  
SW8142



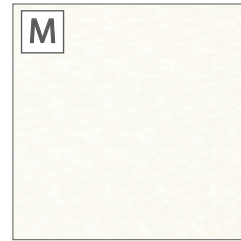
Brown Weave  
FF6925



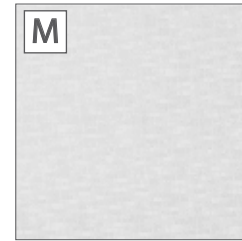
Garden Pink Lace  
LA8152



Grey Weave  
FF6924



Icy White Satin  
Weave  
FF6924



Silver Grey Satin  
Weave  
SW8104



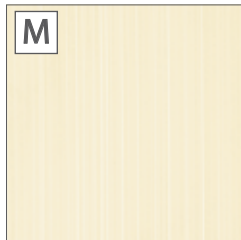
White Lace  
LA1005

### Linear

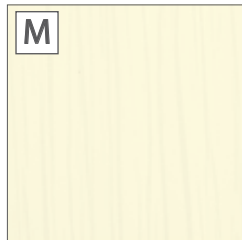
Linear offers the perfect choice for a stand out feature wall, with a choice of finishes including luxurious woods to add a textured appearance, choose between a wide range of colours to either complement or contrast with your existing bathroom design for an effortlessly sophisticated room.



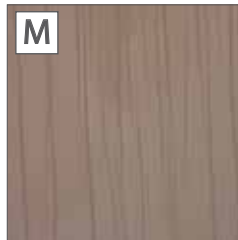
Black Cynosure  
CC8142



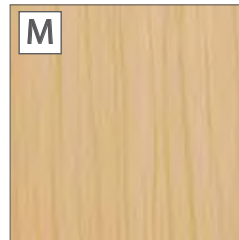
Magnolia Tracks  
TR8052



Pearl Cynosure  
CC8022



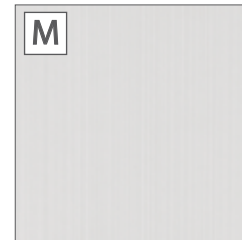
Rock Brown  
Cynosure  
CC8206



Sandel Brown  
Cynosure  
CC8202



Silver Grey Cynosure  
CC8104



Silver Grey Tracks  
TR8104



Smoke Grey Tracks  
TR8102

## Wall panels that tell a story...

### Design and create your unique feature wall for a stunning focal point.

Create a dramatic, yet intimate design statement in your bathroom with our stunning Custom Create panel. The customisable panels are the perfect choice for a wow factor bathroom, allowing you to showcase your favourite photography in your shower enclosure. Choose from one of your own images for a truly bespoke one of a kind, personal touch that pays homage to a favourite scene or occasion. Alternatively, you could hand pick a unique visual from stock photography. You can also choose from one of our own digitally printed designs which include beautiful beaches and breath taking cityscapes.



- Upload your own photos
- Use corporate logos for clients
- Use stock photography websites such as Shutterstock



Please see our website for the minimum artwork requirements. Custom panels are intended for use as feature panels. Two custom panels with the same design are not intended to Hyfdrolock® together, but are compatible with both Spanpanel Classic and Contemporary designs.





## Compliance

Spanpanel complies with Australian, New Zealand and European Standards.

BRANZ Appraised to confirm suitability for the building code of Australia BCA and New Zealand building code NZBC including BRANZ assessment of our technical literature, quality control, installation, service performance and maintenance.

The Spanpanel Wall Lining System, if installed and used in accordance with our published guidelines, can remove the need for fibre cement backing boards and full height waterproof membranes, making Spanpanel a 3-in-1 solution.

## Spanpanel Wall Lining System meets the waterproof requirements of BCA AS3740

### Product

- 1.1 Spanpanel is a pre-finished wall lining that incorporates panels finished with high pressure decorative laminates.

### Scope

- 2.1 Spanpanel is a pre-finished wall lining that incorporates panels finished with high pressure decorative laminates.
- Wet areas such as bathrooms, showers or laundries where moisture-resistant materials are required; and,
  - Domestic hygiene areas where easy to clean surfaces are required; and,
  - Other areas where low maintenance pre-finished wall lining systems are specified.

### Building Regulations

#### National Construction Code (NCC)

- 1.1 In the opinion of BRANZ, Spanpanel, if designed, used, installed and maintained in accordance with the statements and conditions of this appraisal, will meet or contribute to meeting the following provisions of the BCA (2016)

#### BCA 2015 Volume 1 - Class 2 to Class 9 Buildings

**Part F1 - Damp and waterproofing.** Performance FP 1.7. Spanpanel meets the requirement. See Paragraph 12.1-12.2.

#### BCA 2015 Volume 2 - Class 1 and Class 10 Building

**Part 2.4 - Health and Amenity.** Performance P2.4.1 Spanpanel meets this requirement. See paragraph 12.1 - 12.2



**BRANZ Appraised**  
Appraisal No.906 [2016]



**BRANZ Appraised**  
Appraisal No.905 [2016]



## Innovative connection for a smooth and seamless look

Our clever Hydrolock® connection makes it possible to join two panels together without a 'H-Joint profile'. Precisely engineered by experts, Hydrolock® edge details create a discreet & watertight joint for complete peace of mind.

Hydrolock® panels are supplied as standard with a tongued edge and a grooved edge for easy click into place installation. To ensure full flush engagement of Hydrolock® panels, ensure the walls or frames are completely flat and even where the panels will be fitted.

- Full fitting instructions should be read prior to installation
- When manufacturing Hydrolock® joints, 20mm is lost from the original panel width e.g.
  - 598mm = 578mm finished face size
  - 1200mm = 1180mm finished face size
- Tested by BRANZ to 3000 wetting and drying cycles in a spray chamber to confirm the Hydrolock joint will remain water resistant for a minimum of 15 years





## Don't tile it. Spapanel it.

The production of Spapanel is rooted in ecological sustainability; protection of the environment and the timber used; the health and safety of our employees, suppliers, distributors and customers; and our corporate social responsibilities to the wider community.

From forest to manufacture, every link in the process has been independently assessed and certified to some of the most stringent and globally recognised sustainable timber management schemes ensuring the highest possible ecological, social and economic standards.

A rolling programme of environmental and sustainability initiatives at the factory since 2010, has seen a one third pro rata reduction in the operation's carbon footprint, energy use optimisation cutting consumption by 120,000kWh per annum, and solar PV arrays installed generating over 42,000kW of electricity per annum.



# Frequently asked questions

---



## » What Spapanel sizes are available?

The standard Spapanel size is 2400mm x 1200mm (2400mm by 1180mm with Hydrolock® edges). There is a limited selection of colours that are available in 2720mm x 1200mm. We can also supply custom sizes for high volume orders.

## » What is Spapanel made of and what is the product thickness?

Spapanel consists of a high pressure decorative laminate, bonded onto waterproof birch plywood. A plain white balancing laminate is used on the rear. The finished thickness of Spapanel is 11mm.

## » Where is Spapanel Manufactured?

Spapanel is manufactured in the UK, where it has been successfully used and sold since 2003.

## » How many colours are available?

There are a total of 64 colours within the Spapanel range. Not all colours may be stocked in Australia or New Zealand and may need to be special ordered from the UK. The full range can be viewed on our website. You should contact a distributor to check what colours are currently available within Australia.

## » What is the Spapanel warranty?

Spapanel comes with a 15 year manufacturers warranty. Full details can be downloaded from the Spapanel website.

## » Is Spapanel compliant to the building code of Australia and New Zealand?

Yes, Spapanel has been independently appraised by BRANZ as a waterproof alternative solution to Building Code AS 3740 for use in wet areas in both Australia and New Zealand. Copies of our BRANZ appraisals can be viewed and downloaded from our website or the BRANZ website.

## » How much does Spapanel cost, where can I view a showroom and where do I buy from?

To obtain answers to the above questions please visit our website pages 'Showrooms' and/or 'Where to buy' to find your nearest distributor.

## » Can I install Spapanel myself or do you offer an install service?

Spapanel can be installed by any competent DIY person or registered tradie. If you prefer to use an approved installer, who will offer an install warranty, contact [www.wetareasolutions.com.au](http://www.wetareasolutions.com.au)

*For more FAQ's or if you wish to ask a question that is not listed above, please visit [www.spapanel.info/faq/](http://www.spapanel.info/faq/)*



**SPANEL™**

Don't tile it. Spanel it.

## Contact Us.

[info@spanel.info](mailto:info@spanel.info)

[www.spanel.info](http://www.spanel.info)



[www.facebook.com/spanel](http://www.facebook.com/spanel)



[www.twitter.com/spanel\\_it](http://www.twitter.com/spanel_it)



[www.pinterest.com/spanel](http://www.pinterest.com/spanel)



[www.instagram.com/spanel](http://www.instagram.com/spanel)



[www.houzz.com.au/pro/spanel/spanel](http://www.houzz.com.au/pro/spanel/spanel)

Spanel Distributor